



Big Brothers
Big Sisters
OF CENTRE WELLINGTON

Sponsorship Package

Jan 2025-December 2025



*Our Mission: To enable life-changing mentoring relationships to
ignite the power and potential of young people*



About Us

We serve young people in Centre Wellington who face adversity and are in need of an additional consistent and supportive developmental relationship.

Many children and youth in Canada struggle with societal barriers and face adversities in their lives. This includes things such as detrimental living conditions, family violence, risk factors for mental health, school issues, and identity challenges.

These circumstances have nothing to do with the value of who they are or whom they can become, but because of these situations, children and youth risk not having the opportunity to live up to their full potential.



Meet Our Team at BBBSCW



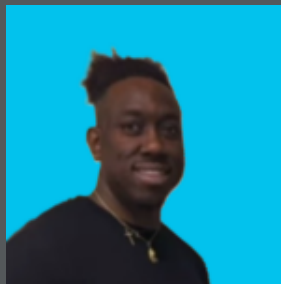
Anneli Segura

Executive Director



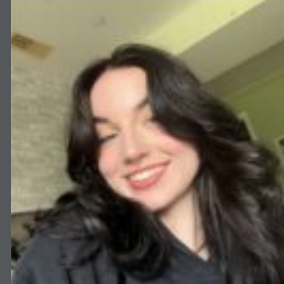
Ashley Winterburn

Director of
Community Programs



Nick Clarke

Community Based
Mentoring Coordinator



Olivia Minnick

Site Based & Group
Mentoring Coordinator



Adam McCaffery

Fund Development
Assistant

Our Location: 900 Tower St ,S. Unit 100A, Fergus ON N1M 3N7 also known as The B Hive

Hours: of Operation: Monday-Friday 8:30am- 4:30pm

Phone: 519-787-0106

Charitable Business Number: 13331-8493-RR0001

Our Vision: All young people realize their full potential


Golf For Kids Sake Sponsorship

Event Date: September 11th, 2025
Location: Ariss Valley Golf and Country Club




Our Golf Tournament attracts 70+ golfers for a fun day in the sun (or rain!).
Come out for 18 holes, games, food, and more!



Title Sponsor (1 Spot)  **\$3,300**


- Your business logo will be featured on all event materials, posted throughout event and celebrated
- 1 x 4/some tickets to event included



Lunch Sponsor (1 Spot)  **\$2,500**

- Your business will be featured where golfers select their meal choices and in the dining area.
- 1x4/some tickets to event included



Cart Sponsor (1 Spot)  **\$2,000**

- Your logo will be displayed on all golf carts used by our golfers throughout the tournament.
- 1 x 4/some tickets to event included



Game Sponsor (3 Spots)  **\$1,750**

- Your logo will be displayed with one of our event games and an opportunity for your staff to join us and facilitate the game.
- 1 x 4/some tickets to event included



Par-Tee Sponsor (4 Spots)  **\$1,750**

- Your logo will be included with swag and recognized with an event giveaway.
- 1 x 4/some tickets to event included

CONTINUED ON PAGE 2



Golf For Kids Sake Sponsorship

Event Date: TBD Summer 2025

Location: TBD



Our Golf Tournament attracts 70+ golfers for a fun day in the sun (or rain!).
Come out for 18 holes, games, food, and more!

Snack Sponsor (1 Spot) \$1,000

- Your business will be featured on the snacks provided to each golfer in their golf cart.
- 2 Tournament entries to the event included

Photo Sponsor (1 Spot) \$1,000

- Your logo will be watermarked on all team photos that are emailed out after the tournament.
- 2 Tournament entries to the event included

Premium Hole Sponsor (18 Spots) \$450

- Have your business promoted for our attendees to see with 2 signs on the course
- 1 Tournament entry to the event included

Hole Sponsor (18 Spots) \$250

- Have your business promoted for our attendees to see with 1 sign on the course.

Hazard Sponsor (6 Spots) \$250

- Join the fun and promote your business on some of the most talked about locations on the course.



Other Ways To Give

Want to give to BBBSCW but don't want to be a Sponsor?

Check out some other options we have!

Third Party Events

These events are organized by you or your community group (e.g. businesses, school groups or corporations) to help raise funds necessary for Big Brothers Big Sisters of Centre Wellington to operate and ensure that every child gains the confidence to achieve more through a mentoring relationship. Big Brothers Big Sisters of Centre Wellington has no fiduciary responsibility and little or no staff involvement, however, we will support you and your event as much as possible to help it be a success. Event examples include: A "something"-a-thon, Raffles, Auctions, Parties, Yard Sales and more. Please feel free to reach out to discuss ideas and opportunities.

Giving Every Month (G.E.M.) Program

By signing up to Give Every Month – what we call a GEM – you will be supporting our cause and spreading your generosity throughout the year. No matter the amount, your monthly commitment ensures that there is a ready and reliable stream of funding available to help us match more children. Monthly giving means low administrative costs, which means that more of your money goes to where it is needed most: ensuring vulnerable youth develop into resilient young people who are able to overcome life's adversities and lead productive and healthy lives.

Matching Gifts

Some employers will match employee donations made to Big Brothers Big Sisters of Centre Wellington or donate to our organization in honour of the hours you have volunteered with us. These gifts have a significant impact on our ability to serve the children and youth in our community. Speak to your employer to inquire about ways you can offer support.

Legacy Giving

Consider making a legacy gift and give the gift that lasts beyond a lifetime. With your help, we can invest funds into our mentoring programs and empower youth to live their potentials! You can take pride in knowing your gift will improve lives of children now and into the future. If you wish to inform us about your place, we can ensure that your gift will be used and acknowledged exactly how you would prefer. We would be happy to meet with you so we can learn more about you and the impact you would like to have.

In Memory/In Honour

A gift made in memory of a loved one offers a thoughtful, caring way to remember the person while contributing to the future of children and youth in Centre Wellington. We will send a 'thank you' letter to the designated recipient, notifying them of your thoughtful gift. A tax receipt will be provided to you.

Honour a loved one by making a gift to Big Brothers Big Sisters of Centre Wellington. By making a donation in your loved one's name you are helping ignite potential for young people in the community.

What Your Support Means

Your support means we can continue offering our vital Mentoring programs. Big Brothers Big Sisters of Centre Wellington turns to people like you - the community and businesses in Centre Wellington. Every dollar we receive goes directly to supporting children in our community who are in need and allows us to empower youth to reach their potential. By helping us change the course of young lives we can in turn change the course of our communities future.



Social Return on Investment

EVERY \$1 INVESTED IN MENTORING RETURNS \$23 TO SOCIETY

\$ 23:\$1

MENTORED YOUTH SEE POSITIVE RESULTS:

IN LIFE

- 81% Report Financial Literacy
- 98% Believe they make good life choices
- 80% Pursue Healthy Lifestyles

IN COMMUNITY

- 87% Have strong social networks
- 50% More likely to volunteer (and give 30% more time!)
- 13% More likely to donate (and give 20% more money)

AT WORK

- 47% Hold senior leadership positions
- 17% More likely to be employed
- 13% Higher earnings (\$315,000 Higher lifetime income)



**Big Brothers
Big Sisters**

OF CENTRE WELLINGTON

Thank You

Your support makes a difference in the lives of Centre Wellington's children and youth



519-787-0106



900 Tower St. S, Unit 100A Fergus ON N1M 3N7



centrewellington@bigbrothersbigsisters.ca



<https://centrewellington.bigbrothersbigsisters.ca/>